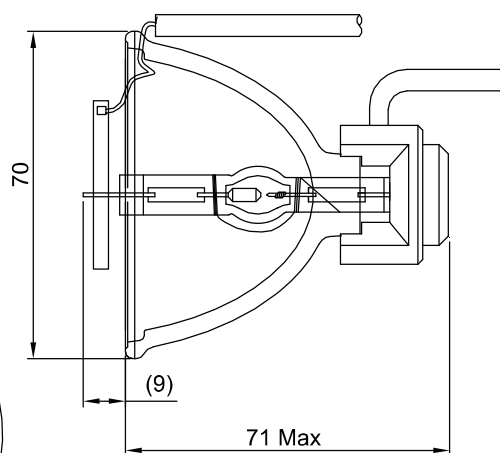
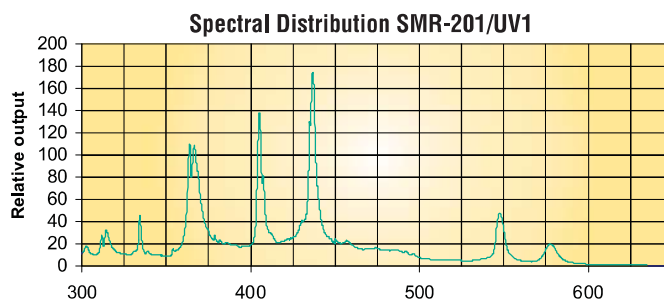
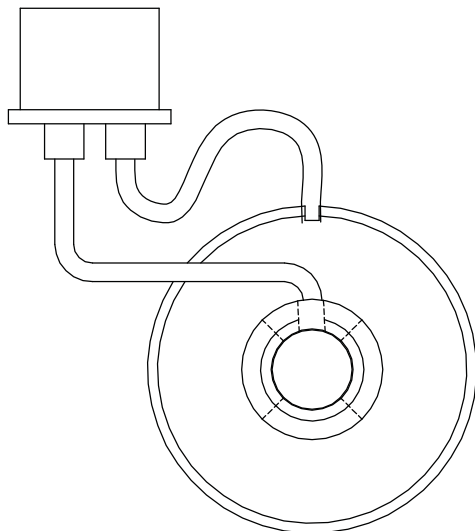
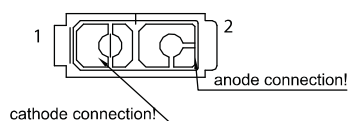


USHIO

METAL ARC LAMPS

EmArc[®] REFLECTORIZED VERSION

SPECIFICATIONS



Lamp aligned for max throughput thru
6mm aperture at 52mm dist from reflector rim.

All dimensions are in millimeters

Ushio Ordering Code	Ushio Lamp Description	Rated Power (W)	Lamp Current (A)	Arc Gap (mm)	Radiant Output (0 hrs)*	Avg Rated Life** (h)
REFLECTORIZED VERSION						
N/A	SMR-201/UV1	200W	5 nom.	1.2	5.0W min.	1500

*As measured in the range of 320-400nm through a 6mm aperture at a working distance of 52mm from reflector rim.

**Life defined as time until output drops to 50% of initial value at 0 hours. (Strongly dependent upon operating conditions and environment).

Lamp Voltage (V)	Maximum Allowable Starting Current	Min. Ignition Voltage	Ignition Voltage	Minimum Voltage After Start Up	Typical Warm Up Time
40V DC (±5)	9A	5-10kV	25kV	10-15V DC	90 sec. nom.

The specifications on this sheet supercede all previously published specifications and may be subject to change for design and specification improvement without prior notice.



© 2012 USHIO America, Inc. All rights reserved.